

INTRODUCING SQUARE MILE FARMS



We are reimagining **farming** and the urban environment

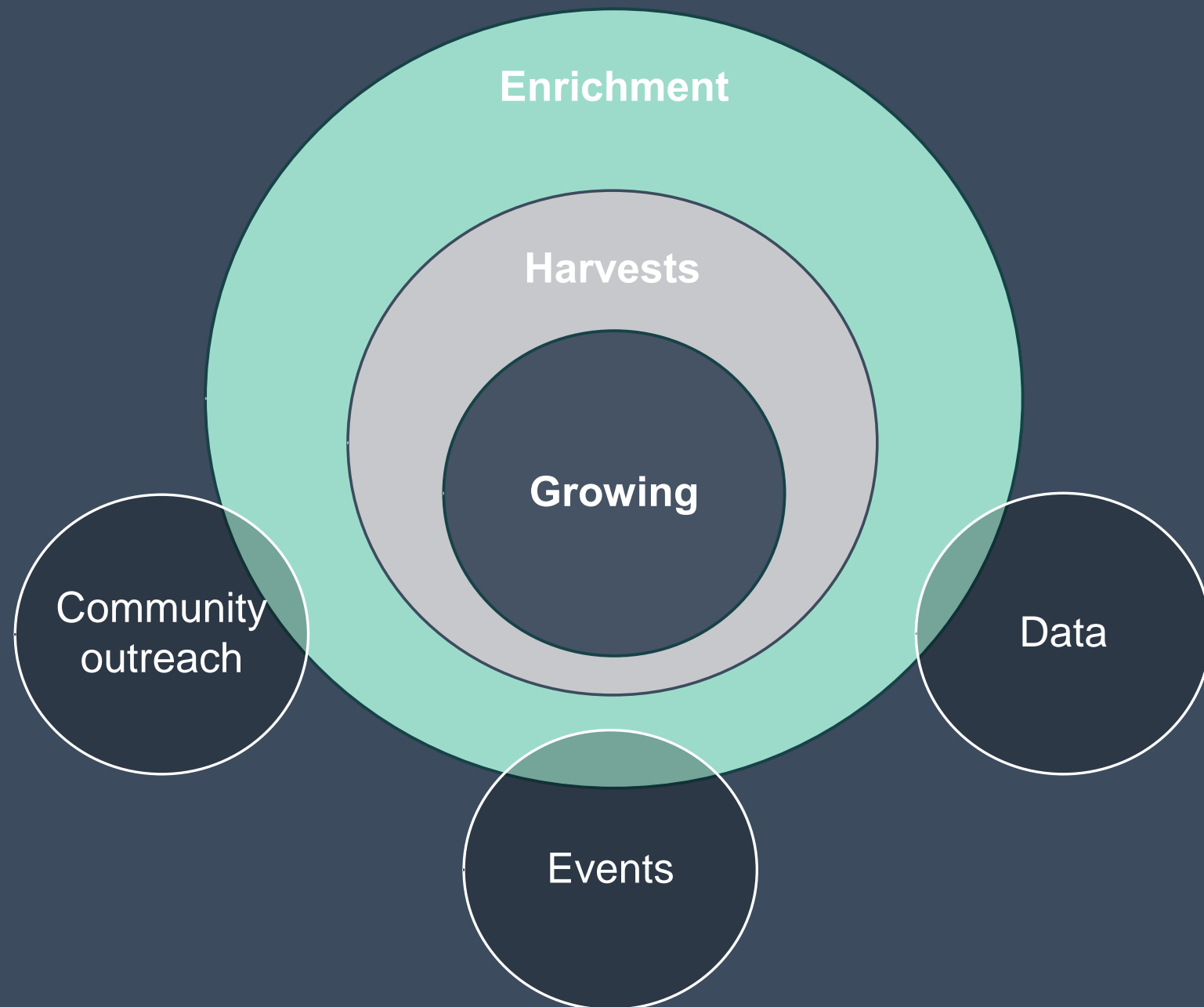
Our purpose is to bring farming into the built environment, empowering companies and people to live healthier, more sustainable lives.

Our ambition is to be the largest farm in the UK, operating a network of urban farms powered by a platform that connects growing communities



An all encompassing experience

The Square Mile Farms solution is much bigger than simply growing plants. It is an all encompassing service that engages, connects and inspires!



Solutions for every space

Our portfolio of farms offers a highly flexible solution for a wide range of installations.



Off the shelf, plug & play



Built to order systems



Building scale & master plans



Meanwhile use and experiential

Bespoke systems



Farmstands

Free-standing, plug-and-play units made for **flexible installations growing 24 plants.**

Made from ocean bound recycled plastic.



Farmwalls

Larger scale fixed installations. Modular or bespoke.
Growing minimum of 63 plants. Available in over
700 finishes or colours and flexible form factors



Bespoke solutions

Flagship installations tailored for
any environment



We work hand in hand with architects and fitout teams to design, create and install high impact Farm Wall solutions that are both visually stunning, and highly productive. All with the full farm and harvest experience included.

Farm in a Box



A plug and play solution for meanwhile spaces. Convert empty retail or office space into a popup community farm. Benefit from business rates relief while adding bright and exciting new destinations to local neighborhoods.

Harvest Events

Fostering 'collaboration, camaraderie and culture' with our clients and their teams.

Our Harvest Events bring people together to actively engage with the farms. We run these every two weeks, with your teams harvesting the produce and taking it home with them



Harvest to kitchen

We work side by side with in-house catering teams to provide the freshest and most sustainable produce for the kitchen. With the food being grown right in the office, we talk about food steps, rather than food miles.

We partner with the catering teams to align the planting with the menus, to add flavour, freshness and a great story to the table.

We can produce commonly used large leaves as bases for salads and cooked dishes, as well as herbs and aromatics for sauces, with some hard to find plants for that something special.

We also partner on creating events to share knowledge and inspiration, running cooking demonstrations, hands on classes and sharing recipes.



Enrichment Activity

Through carefully curated partnerships and our inhouse expertise, we have a range of events, products and services to enrich the office farm experience and extend the reach into the local community.

The range of options includes

- Community engagement workshops with local schools and community groups
- Charitable donations of produce
- Grow at home kits



Creative Events

Our talented events team work together with our community managers and urban farming team, as well as expert partners, to create and execute a wide range of activities.



From something as simple as a pop-up stand giving away seedlings to grow at home, to a full cooking demonstration, as well as classes on keeping your supermarket herbs alive and creating your own herb garden, there is a wide menu to choose from.



What we're growing

We can grow over 50 varieties of leafy-green vegetables, salad leaves and herb

Here are some popular examples:



Curly Kale



Sorrel



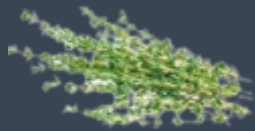
Lettuce



Coriander



Rainbow Chard



Thyme



Flat Parsley



Pak Choi



Mint



Sage



Basil



Lemon Basil



Purple Basil



Thai Basil



Flexible purchase options

We have a range of payment options for farms installations to align with our client budgeting models.

Our standard model is purchase of the equipment, with a monthly maintenance, harvest and community service.

We can also structure this on a lease to own basis with the purchase price spread over 24 months or as a one time initial charge covering the purchase price and first year's maintenance on one invoice.



Measuring **impact**

We are gathering real-time data from all of our farms which we share back with our clients. We are adding in new sophisticated measures of our impact in 2024 including CO2E for our produce and points contribution to building sustainability certification.



A healthy building

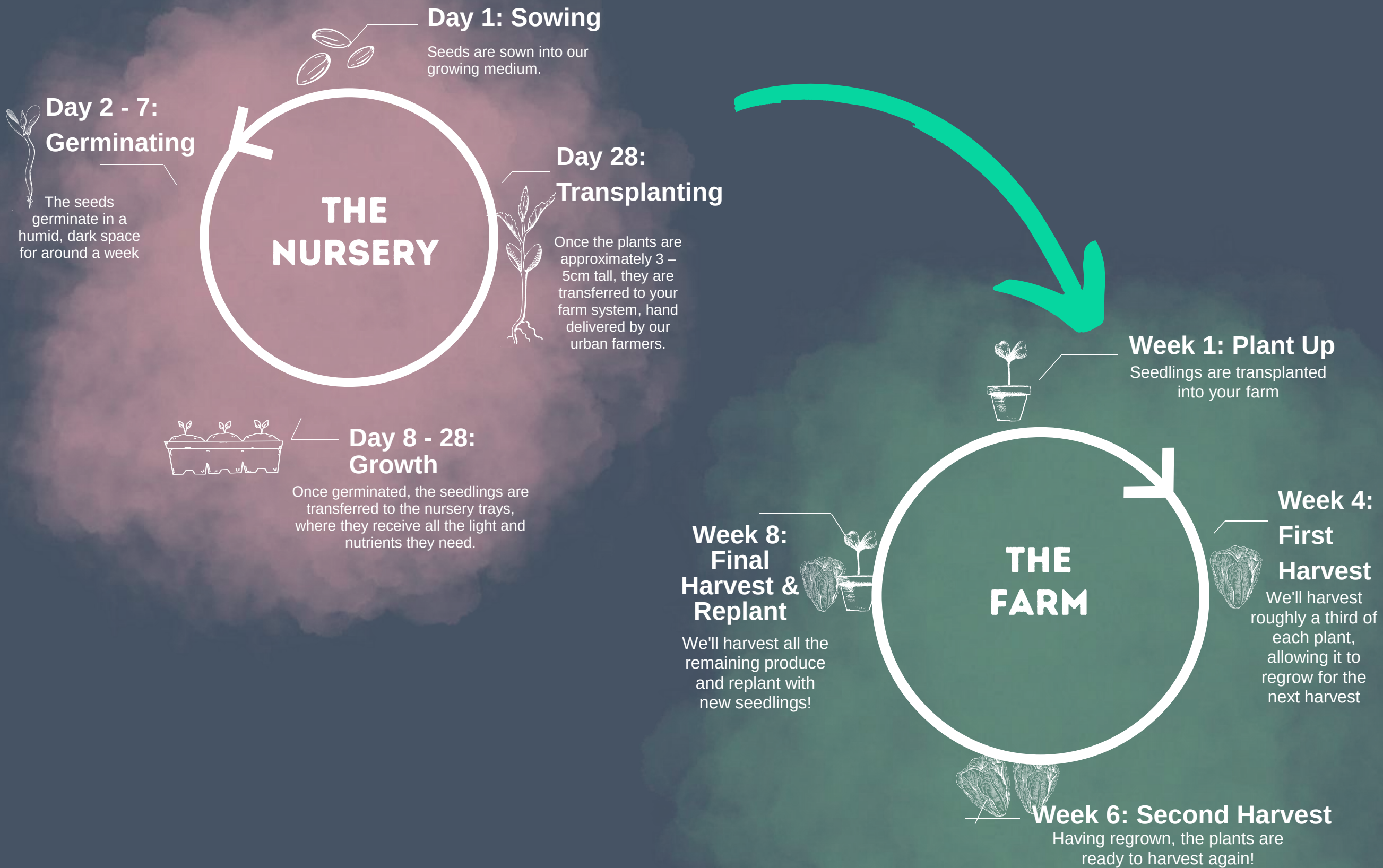
Square Mile Farms solutions contribute across multiple categories in Well Building assessments, meaning that you get a lot of impact from a single installation. The 5 categories our farms contribute to are highlighted with a green ring below.



- Farms on-site mean nourishment on the doorstep of the consumer
- This also means we save radically on food-miles, thus reducing our carbon footprint (>50% of the UK's fresh produce is imported from overseas)
- Furthermore, urban farming techniques use up to 90% less water than conventional methods

- Working with plants, or green exercise has been shown to improve moods & increase self-esteem
- Whilst they improve air quality - plant-filled rooms contain 50-60% fewer airborne moulds and bacteria and replace CO₂ with O₂, which is shown to improve cognitive function
- Plants also help reduce heat spots and dampen noise

The growing process



Farmstand **specification**

Description

The Farmstand is a self watering hydroponic system. A pump recirculates water and nutrients from the reservoir in the base to the plants.



Made From Ocean Bound Plastics

On average, the Farmstand saves 74 milk jugs from polluting our oceans.



95% Less Water Usage

The Farmstand reservoir reclaims water for your next watering cycle



Grows Fresh Produce Year Round

Each Farmstand grows 24 edible plants, indoors without soil.



Specifications

- 150cm H x 74cm dia.
- 24 individual plant ports
- 4x LED halo grow-lights
- 2 x 3 pin plug sockets
- 119 watts power consumption

Farmwall specification



FSC Certified Birch ply

The Farmwall is made from sustainably sourced timber in London



High production, small footprint

The vertical growing design maximises output, while efficiently using space



Designed to scale

Flexible design allows multiple units to be joined together as they are needed



Specification (1.1M module)

- Height - 2200mm
- Width - 1100mm
- Depth - 500mm max
- 3x LED Hortiblade LED grow lights
- 63 plants
- 134 watts power consumption

Our partners in growing

CBRE

JLL

mitie

inmarsat

AMERICAN EXPRESS

TOWER 42

savills investment management

capco

DERWENT LONDON

Mindful Chef

AXA Insurance Reinsurance

THE BOWER OLD ST.

British Land

GROSVENOR

theTradeDesk

BNY MELLON

HALEON

IEQT

GPE

DORRINGTON

ADDLESHAW GODDARD

FORA

HSBC

TOKIOMARINE

Landsec

Knight Frank

NETFLIX

frontier economic

BARINGS

ST BOTOLPH BUILDING

Aberdeen Standard Investments

mace

vodafone

Schroders

Inspiration HEALTHCARE

UNIVERSITY OF WESTMINSTER

THE CROWN ESTATE

US UNIVERSITY OF SUSSEX

Pearson

ARGENT

COMPASS GROUP

sodexo

SQUARE MILE FARMS